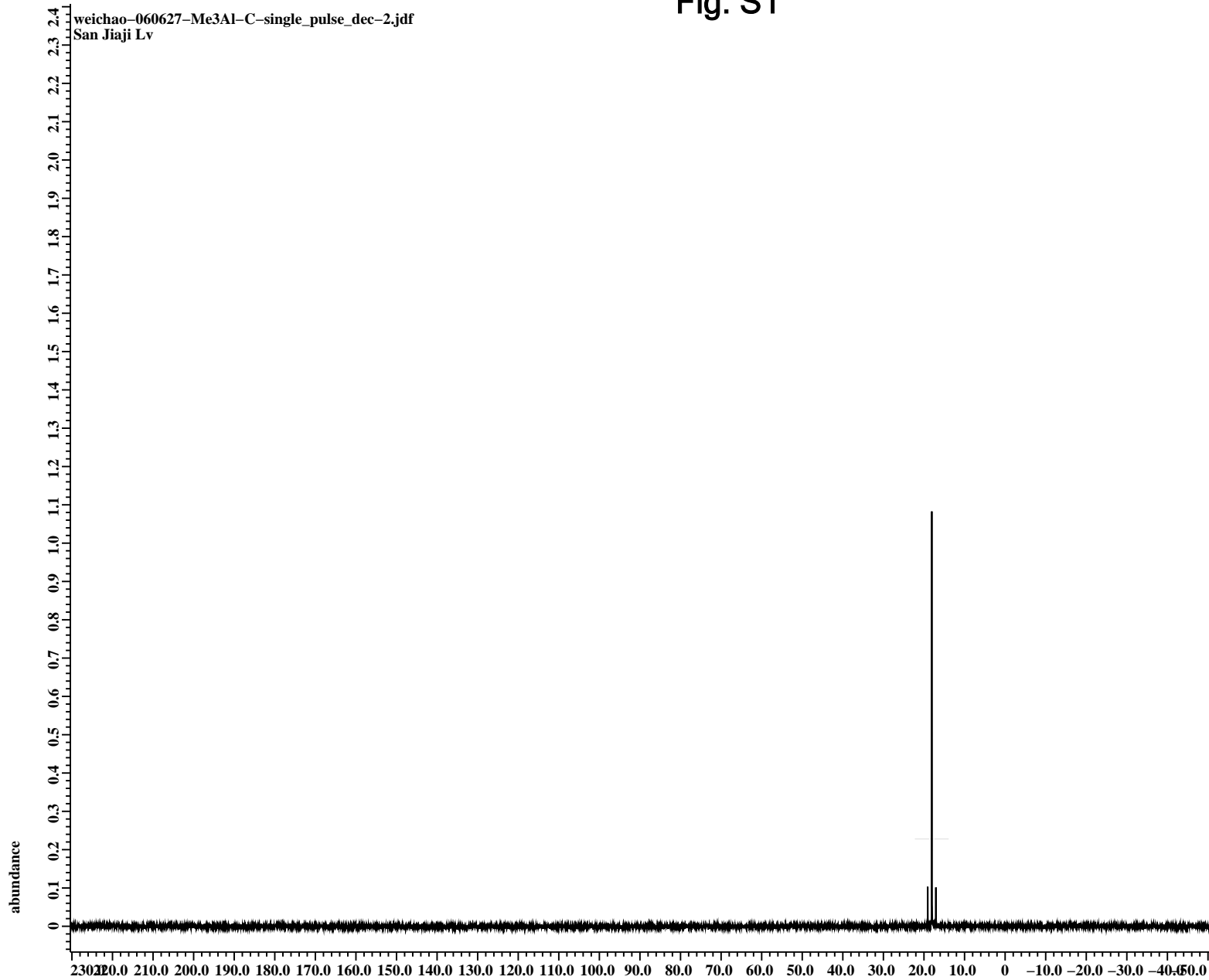


Fig. S1



---- PROCESSING PARAMETERS ----  
dc\_balance : 0 : FALSE  
sexp : 2.0[Hz] : 0.0[s]  
trapezoid3 : 0[%] : 80[%] : 100[%]  
zerofill : 1  
fft : 1 : TRUE : TRUE  
machinephase  
ppm

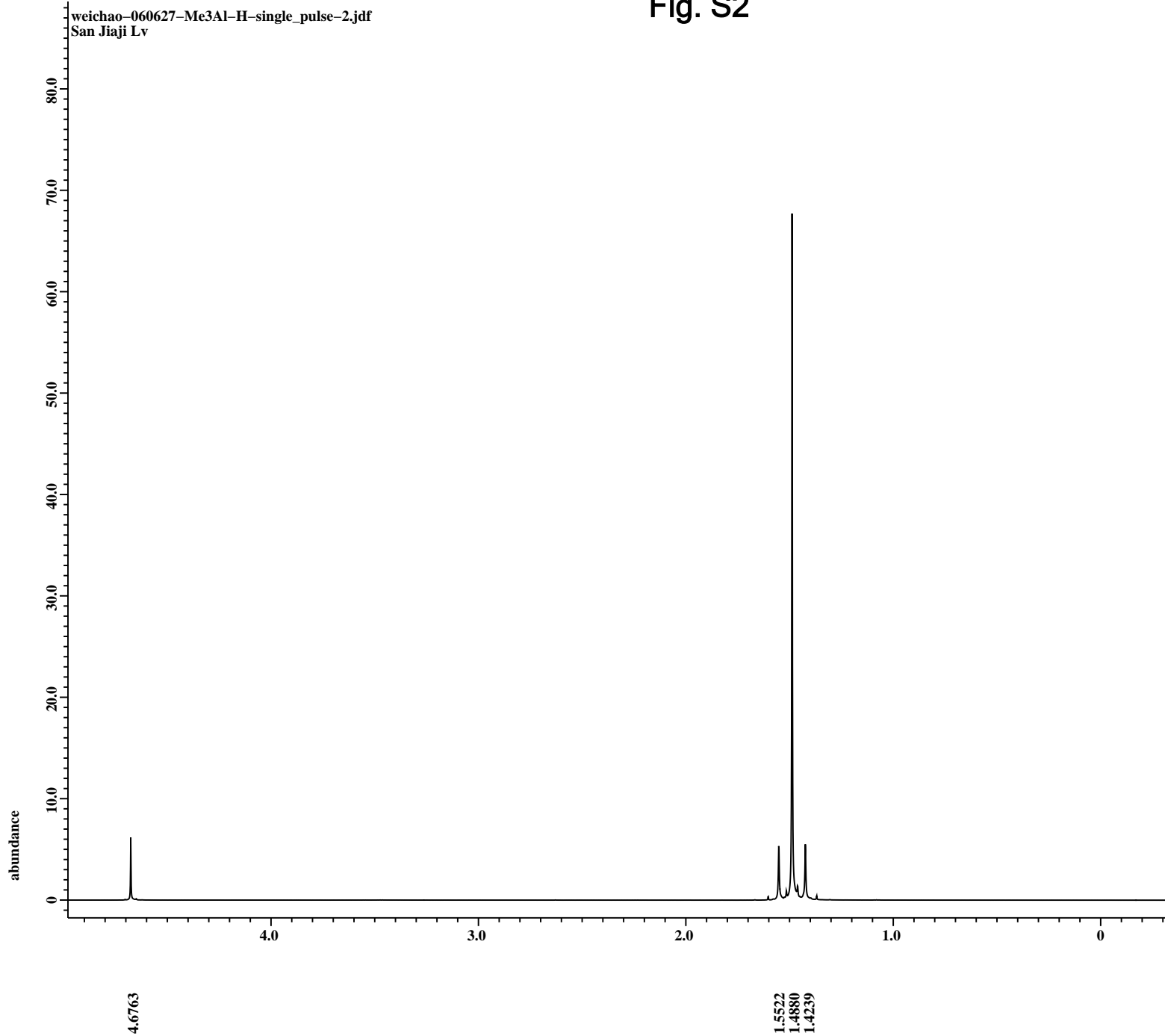
Field\_strength = 14.09636928[T] (600[M  
X\_acq\_duration = 0.61865984[s]  
X\_domain = 13C  
X\_freq = 150.91343039[MHz]  
X\_offset = 90[ppm]  
X\_points = 32768  
X\_prescans = 4  
X\_resolution = 1.61639715[Hz]  
X\_sweep = 52.96610169[kHz]  
Irr\_domain = 1H  
Irr\_freq = 600.1723046[MHz]  
Irr\_offset = 5[ppm]  
Clipped = FALSE  
Mod\_return = 1  
Scans = 2048  
Total\_scans = 2048

X\_90\_width = 9.5[us]  
X\_acq\_time = 0.61865984[s]  
X\_angle = 30[deg]  
X\_atn = 5.7[dB]  
X\_pulse = 3.16666667[us]  
Irr\_atn\_dec = 19.5439[dB]  
Irr\_atn\_noe = 19.5439[dB]  
Irr\_noise = WALTZ  
Decoupling = TRUE  
Initial\_wait = 1[s]  
Noe = TRUE  
Noe\_time = 2[s]  
Relaxation\_delay = 2[s]  
Repetition\_time = 2.61865984[s]  
Solvent = D2O  
Spin\_action = SPIN ON  
Spin\_state = SPIN ON  
Spin\_status = SPIN ON  
Spin\_get = 16[Hz]  
Spin\_set = 15[Hz]  
Spin\_gas\_source = AIR  
Sample\_action = LOADED  
Sample\_state = LOAD  
Sample\_status = LOADED  
Changer\_sample = 0

19.0734  
18.0666  
17.0705

X : parts per Million : 13C

Fig. S2



weichao-060627-Me3Al-H-single\_pulse-2.jdf  
San Jiaji Lv

---- PROCESSING PARAMETERS ----  
dc\_balance : 0 : FALSE  
sexp : 0.2[Hz] : 0.0[s]  
trapezoid3 : 0[%] : 80[%] : 100[%]  
zerofill : 1  
fft : 1 : TRUE : TRUE  
machinephase  
ppm  
auto\_reference : 5[%] : TRUE

Field\_strength = 14.09636928[T] (600[M]  
X\_acq\_duration = 1.4548992[s]  
X\_domain = 1H  
X\_freq = 600.1723046[MHz]  
X\_offset = 7.0[ppm]  
X\_points = 16384  
X\_prescans = 1  
X\_resolution = 0.68733284[Hz]  
X\_sweep = 11.26126126[kHz]  
Irr\_domain = 1H  
Irr\_freq = 600.1723046[MHz]  
Irr\_offset = 5[ppm]  
Tri\_domain = 1H  
Tri\_freq = 600.1723046[MHz]  
Tri\_offset = 5[ppm]  
Clipped = FALSE  
Mod\_return = 1  
Scans = 20  
Total\_scans = 20

X\_90\_width = 13.76[us]  
X\_acq\_time = 1.4548992[s]  
X\_angle = 45[deg]  
X\_atn = 4.7[dB]  
X\_pulse = 6.88[us]  
Irr\_mode = Off  
Tri\_mode = Off  
Dante\_presat = FALSE  
Initial\_wait = 1[s]  
Relaxation\_delay = 1[s]  
Repetition\_time = 2.4548992[s]  
Solvent = D2O  
Spin\_action = SPIN ON  
Spin\_state = SPIN ON  
Spin\_status = SPIN ON  
Spin\_get = 15[Hz]  
Spin\_set = 15[Hz]  
Spin\_gas\_source = AIR  
Sample\_action = LOADED  
Sample\_state = LOAD  
Sample\_status = LOADED  
Changer\_sample = 0

4.6763

1.5522  
1.4880  
1.4239

X : parts per Million : 1H